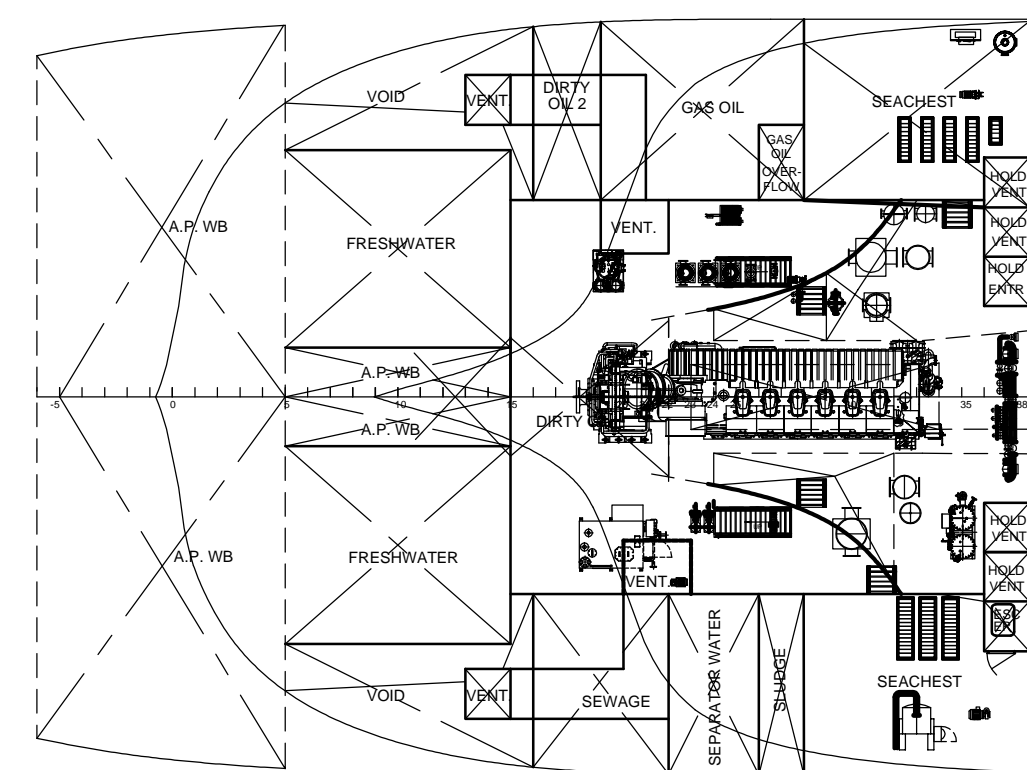
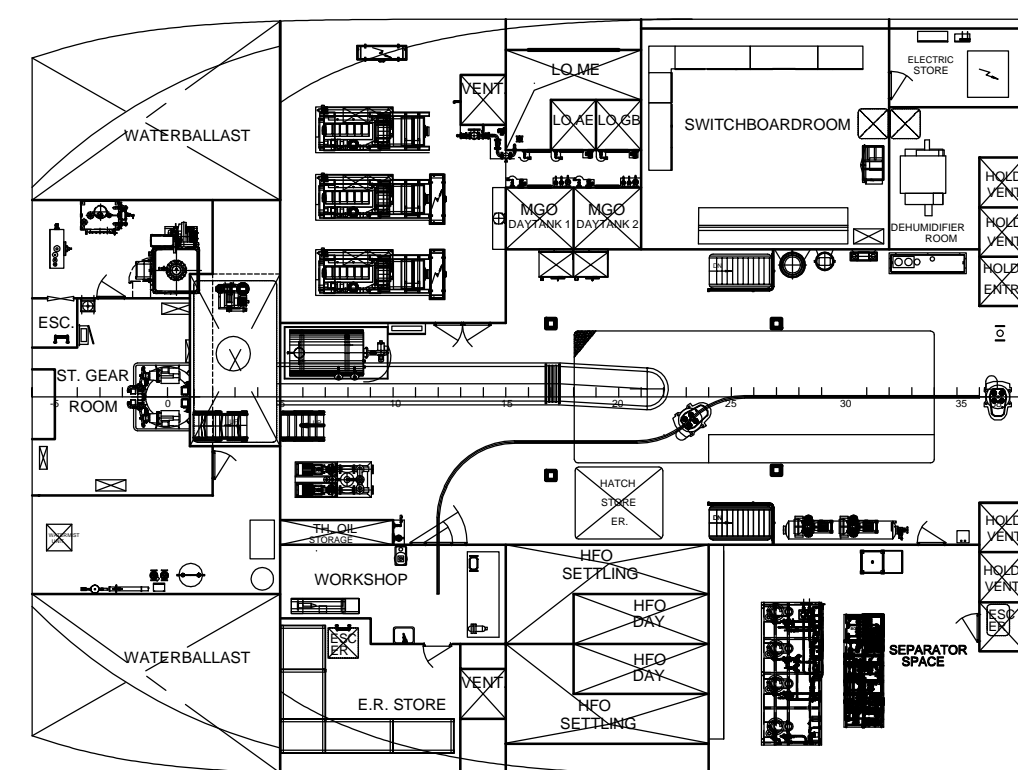


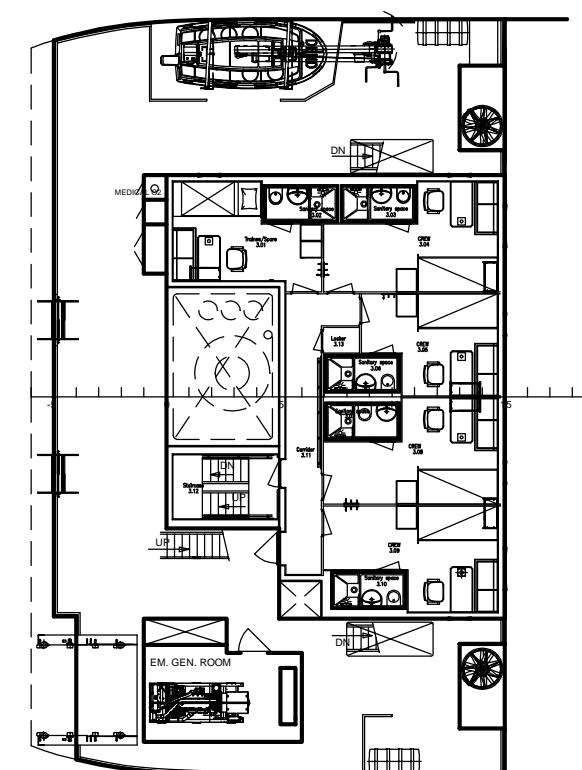
E.R. PLATFORM 4250



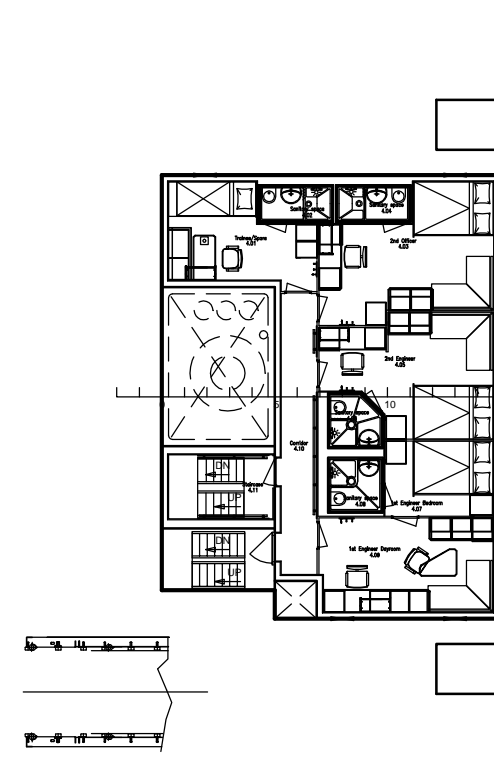
E.R. PLATFORM 7550



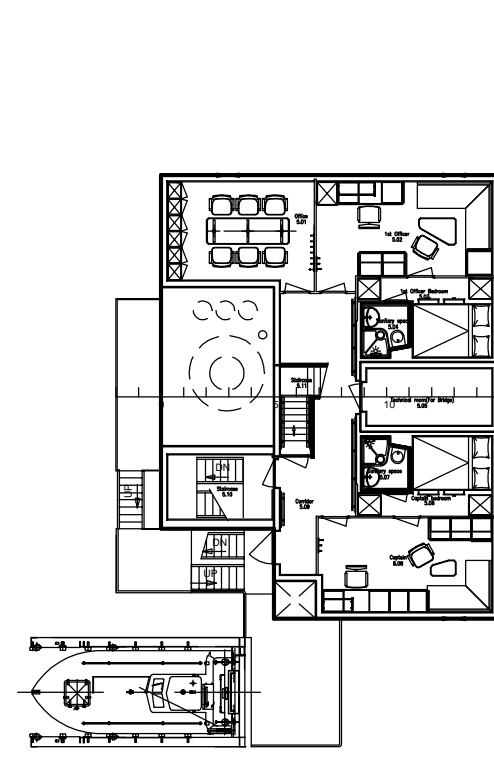
BOATDECK 16950



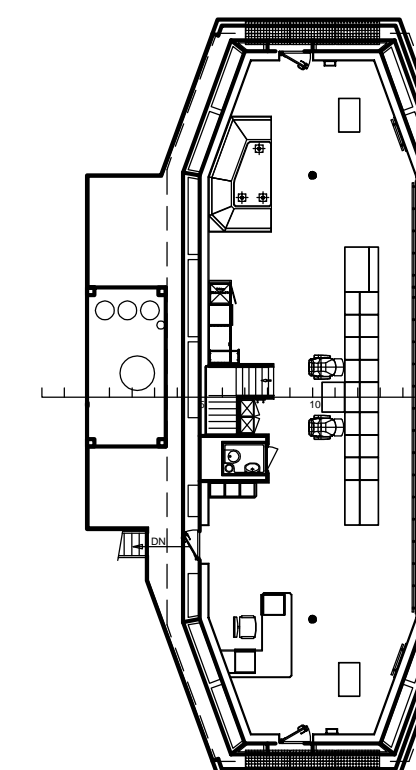
OFFICERSDECK 19650



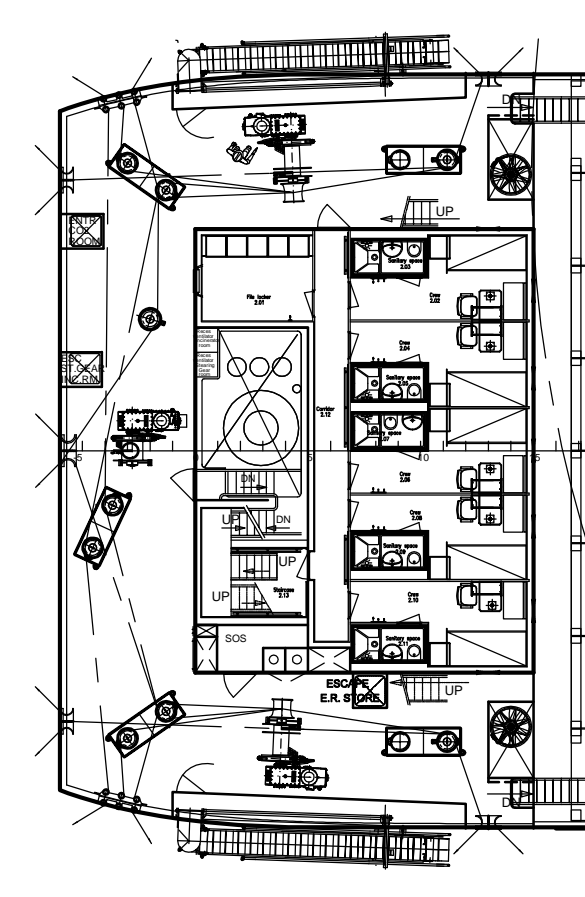
CAPTAINSDECK 22350



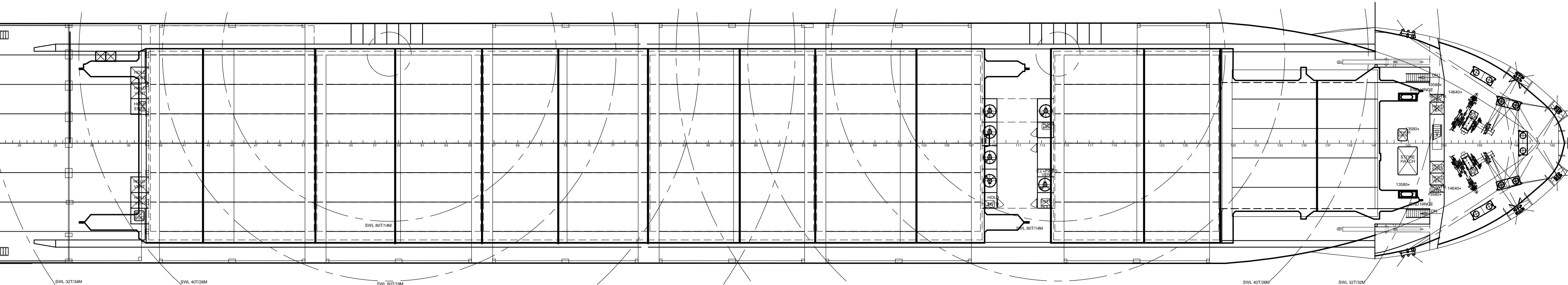
BRIDGEDECK 25050



POOPDECK 14250

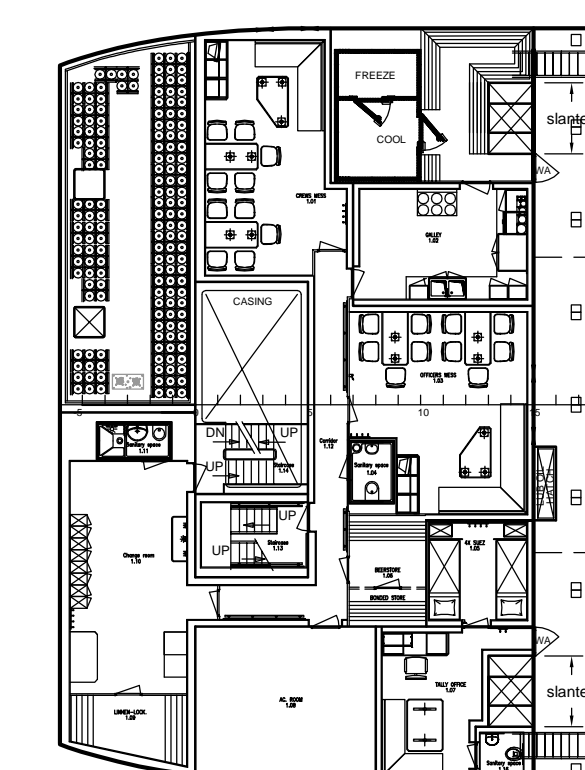


HATCHES

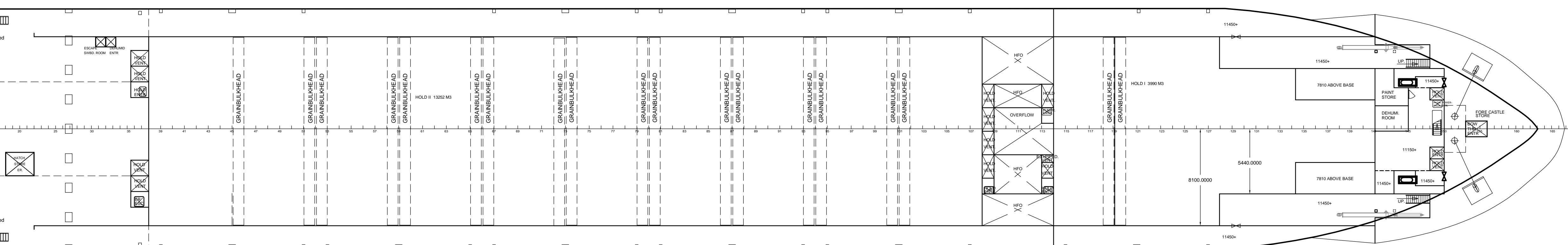


FORECASTLE DECK

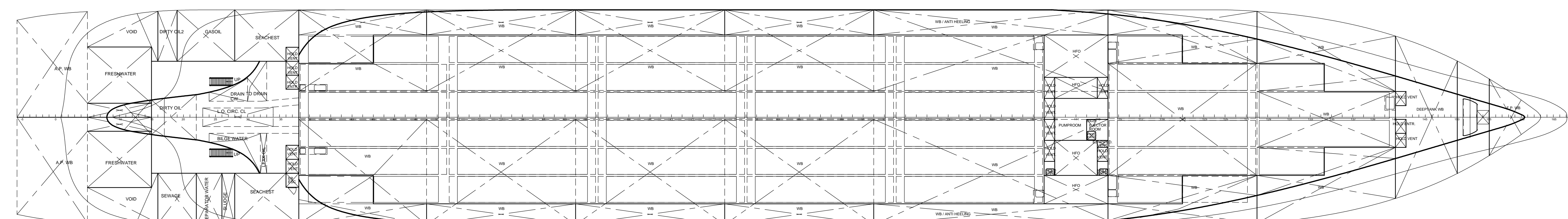
MAINDECK 11450



MAINDECK 11450



TANKTOP 1300



DAMEN
COMBI FREIGHTER 13500

Dimensions

Length o.a.	: 148.25 m
Length p.p.	: 136.99 m
Beam mid.	: 20.10 m
Depth mid.	: 11.45 m
Draught mid.	: 8.25 m
Deadweight (twendecks excl.)	: 13500 ton
Gross Tonnage	: 9750 GT
Net Tonnage	: 4550 NT

Capacities

Hold 1	: 3990 m ³ = 140.913 cuft
Hold 2	: 13262 m ³ = 467.989 cuft
Total Holds	: 17242 m ³ = 608.902 cuft
Heavy Fuel Oil (RMG35)	: 737 m ³
Ballast Water	: 6405 m ³
Fresh Water	: 120 m ³
Gas Oil (DMA)	: 98 m ³
Containers hold	: 312 TEU stackload 100 ton/TEU, 135 ton/TEU
Containers hatches	: 400 TEU stackload 50 ton/TEU, 65 ton/TEU
Containers total	: 712 TEU

Performance
Speed 15.5 kn at 8.25 m design draft with 85% MCR, no PTO
Main Engine 6000 kW (100% MCR)

DAMEN DAMEN SHIPYARDS GORINCHEM

Industrieterrein Avelingen West 20 P.O. Box 1 phone +31 (0)183 63 99 11 info@damen.nl
4302 WS Gorinchem 4300 W Gorinchem Fax +31 (0)183 63 21 69 www.damen.nl

COPYRIGHT DAMEN SHIPYARDS GROUP

DRAWN	DSCV	FORMAT	A0	PROJECTION
CHECKED		SCALE	1:200	
APPROVED		DATE	02-07-2009	

General arrangement

TYPE	CF 13.500	DERIVED FROM DWG	567500-000-001-S
COMP NO		DWG NO	567501-000-001
SECT NO		YARD NO	
		contractor	567501
		yard no.	
		building yard	