



m/v "STELLAR MAESTRO"

TYPE

Heavy-lift multi-purpose dry cargo vessel, strengthened for heavy cargoes, equipped for the carriage of containers, tweendeck can be used as bulkhead in holds

Fitted with all modern nautical and communication equipment

YEAR OF BUILT

June 2012

PLACE OF BUILT and NAME OF BUILDERS

P.R. of China / Damen Yichang Shipyard

FLAG/ PORT of REGISTRY

ANTIGUA & BARBUDA / St. John's

IMO NUMBER

9549566

CALL SIGN

V2QK8

OWNER

STELLAR MAESTRO C.V.

Oostersingel 47, Wedde, 9696BA
The Netherlands

MANAGING/OPERATING OFFICE

STELLAR NAVIGATION LTD.

Reg. no.: 445562604
Baratashvili 6 / Dumbadze 7, 20
Batumi, 6010 Georgia

E-mail: office@stellar-navigation.com
operations@stellar-navigation.com

www.stellar-navigation.com

CLASS

DNV GL

Hull: 100 A5 E3, DBC DG, Multi-Purpose Dry Cargo Ship, Equipped for Carriage of Containers, Strengthened for Heavy Cargo; Machinery: MC E3 AUT

DIMENSIONS

LOA	146,25	m
LBP	136,99	m
Breadth moulded	20,10	m
Depth moulded	11,45	m
Draught max.	8,25	m

TONNAGE

Deadweight (incl.twd panels)	13524	mt
GT/NT	9963 / 4937	

CARGO HANDLING GEAR

Mac Gregor	2 x electric hydraulic, wire luffing
	80mt/14m; 60mt/19m; 40mt/26m; 32mt/34m

HOLDS

No. of Holds	2
Double skin/narrow stepwise fore/aft/container dimensions	
All holds are CO ₂ -fitted	

CAPACITY

Hold 1	Length	26,93	m
	Beam	Fore 5,20	m aft 15,77 m
	Tank Top	284	m ²
	Tween deck	357	m ²
	Capacity	3990	m ³ 140'913 ft ³
Hold 2	Length	69,82	m
	Beam	Fore 15,77	m aft 10,45 m
	Tank Top	1066	m ²
	Tween deck	1103	m ²
	Capacity	13252	m ³ 467'989 ft ³
Total Holds Capacity		17242	m ³ 608'902 ft ³
<small>* in case tweendeck's panels in stowed less 1258 m³/44426 ft³</small>			
Containers hold/deck/total		312/400 – total	712 TEU
		135/65 – total	

HATCHES

No. of Hatches	2 (hydraulic folding type)
Hatch Cover Dimensions	Hatch 1: 26,93 x 16,27/10,96 m
	Hatch 2: 69,83 x 16,27 m
Hatch Cover Area	Hatch 1: 376
	Hatch 2: 1140

PROPULSION

Main Engine	MAC 6M43C / 6000 kW at 500 r.p.m
Bow Thruster	720 kW
Shaft Generator	1148 kW

SPEED & CONSUMPTION

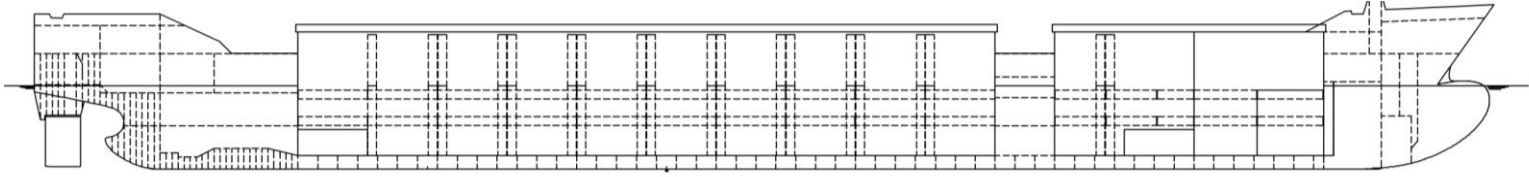
Aht. 14,0 kn. Wind Beaufort 2 & Sea Douglas 2, no deck cargo		
IFO 380 cst	laden	abt. 20,5 mt
	in ballast	abt. 19,5 mt
MGO	idle	abt. 1,00 mt
	No MGO at sea with shaft generator connected cranes working	abt. 2,00 mt

LOAD DISTRIBUTION

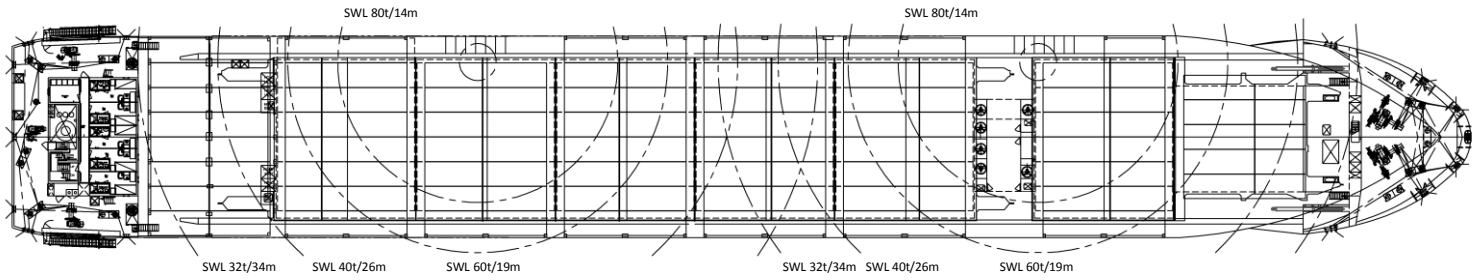
Tank Top	18	mt/m ²
Tweendeck	5	mt/m ²
Hatchcover	1,75	mt/m ²



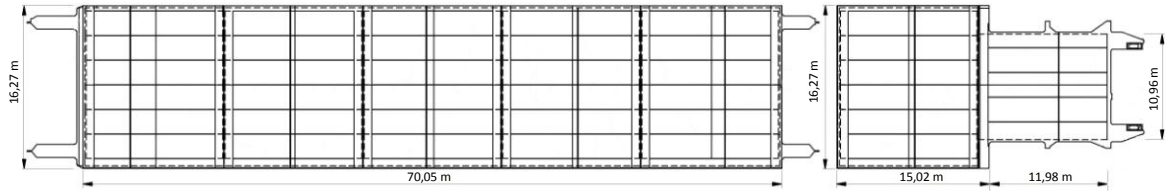
PROFILE



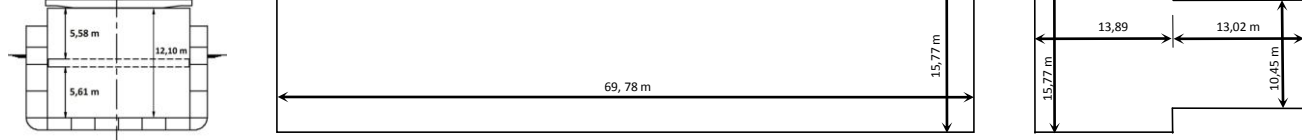
MAIN DECK



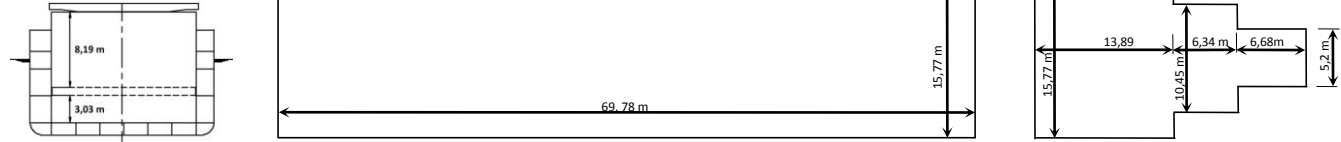
HATCH COVERS



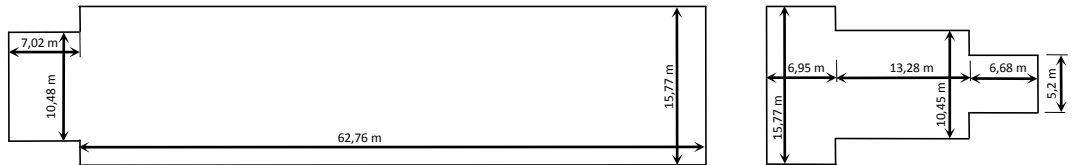
TWEENDECK UPPER POSITION



TWEENDECK LOWER POSITION



TANK TOP



HOLD No. 1

HOLD No. 2

